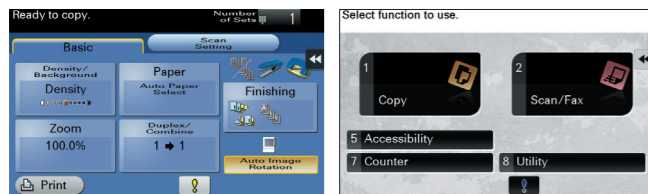


Innovation helping everyone to reach the full potential

Screen display enlarge and colour reversal functions

The screen display enlarge function to enlarge the text on the buttons. The screen display colour reversal function to reverses the display colour while maintaining the same contrast ratio. For better visibility to help elderly users and users with low vision.



Detachable paper cassette

Paper cassette of the MFP is detachable. Jammed paper remained inside of the MFP can be easily remove. To reduce MFP downtime.



Environmental contribution is always the top priority

Usage of the recycled materials

Recycled PC/ABS and biomass plastic have been used in the MFP body. The recycled material usage is approximately 11% of total MFP weight ratio*1 and approximately 51% of the MFP main body are made by the recycled materials.

*1 Total weight ratio of resins and plastics used in this machine.



Top class power consumption and TEC value in its class

The MFP CPU power set to turned off during the sleep mode. This results the top class 0.5 W power consumption ratio (during the sleep mode). The TEC value has also been reduced approximately 32-55%. More CO₂ emissions from MFP can be reduced.

* Values for 220-230 V
* TEC values applied to the International Energy Star Program Version 2.0

Yearly CO₂ emissions:
TEC value x 52 weeks x emission factor
(From the November, 2011 press release by Japan's Ministry of the Environment.)

367 B&W 36 ppm **287 B&W 28 ppm** **Resolution 1,200 dpi** **Scan 45 opm Simplex** **Biometric Authentication** **IC-Card Authentication** **Emperon Drive!**

USB Print **Colour Internet Fax** **Fax** **Mobile Support** **Bioplastic** **Recycled PC/PET** **Simitri with Biomass** *1 Optional

Model shown is 367 with options.

For more information please visit the bizhub Web site at

www.konicaminolta.com/me

Product appearance, configuration and/or specifications are subject to change without notice. This product is not available for some countries or regions.

KONICA MINOLTA, the KONICA MINOLTA logo and symbol mark, "Giving Shape to Ideas", bizhub, bizhub PRO, bizhub PRESS, magicolor, PagePro, PageScope, Simitri, Simitri HD, Simitri HD+, Simitri with Biomass, Emperon, S.E.A.D., S.E.A.D.II, Printgroove and Konica Minolta Optimised Print Services and their respective logos are registered trademarks or trademarks of KONICA MINOLTA, INC. Evernote is a registered trademark or trademark of Evernote Corporation. Google is a trademark or registered trademark of Google Inc. in the U.S. and other countries. SharePoint is a registered trademark or trademark of Microsoft Corporation in the U.S. and other countries. All other brands and product names are registered trademarks or trademarks of their respective companies or organisations.

Presence in the region

Dubai . Kingdom of Saudi Arabia . Kingdom of Bahrain . Kuwait . Qatar . Sultanate of Oman . Lahore Pakistan . Republic of Yemen

Ecology & Environment

KONICA MINOLTA products are designed with the environment in mind.

- Energy Star
- RoHS Compliance
- WEEE Compliance
- Eco-friendly Toners
- Production at ISO Certified Factories



From consulting, system design, to operations, Konica Minolta offers total support to optimise your office output environment.

Requirements for safe use

- Please read and follow the instruction manual to ensure safe operation.
- Only operate using appropriate power supply and voltage.
- Connecting the earth wire to an inappropriate place may cause explosion or electric shock. Please connect accordingly (Taiwan and the Philippines only).



**bizhub
367/287**

A3



367 BW **36** PPM

287 BW **28** PPM

Giving Shape to Ideas

Konica Minolta Business Solutions Middle East FZE
P.O. Box 261369, Jebel Ali Free Zone, Dubai, United Arab Emirates
Telephone +971 4 880 8 388

9251-3231-01

Monochrome MFP with advanced functions is able to respond your workstyles



The simplicity and usability to fit in any working environment

New 7 inch operation panel

The new 7 inch operation panel provides industry top class multi-touch sensitivity, user friendly interface and intuitive operability. 4 hard menu keys at the bottom of the panel and the on-screen soft menu keys can allow user to register up to 9 commonly used functions such as copy, fax, zoom or soft numeric keypad.



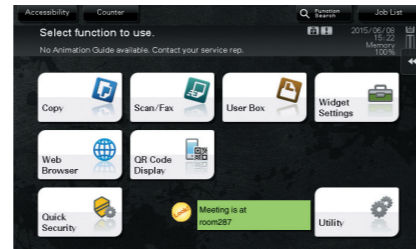
Hard registration keys
Register up to 4 commonly used function.

Soft menu keys
Register up to 5 commonly used function.

Soft menu keys will appear by tapping on the screen tab.

Widgets function

Text boxes, icons, or GIF animations can be posted on the MFP operation panel like the sticky notes. These can be used to display office communications, MFP usage rules, or warnings.



Lighter and compact MFP body

The newly developed MFP main body offers compact and lightweight body than its predecessor, the bizhub 283/223. The MFP is able to fit almost in any type of working space.

The product design

The bizhub 367 series adopts the easy and intuitive INFO-Palette design and smart user interface. To ensure, to always provide the same user experience in any business situation through the seamless operation no matter from the PCs, tablets or smartphones.



Print from anywhere, anytime with the most advanced wireless, mobile and cloud technology

The Mobile Touch Area

Mobile Touch Area is newly added on the operation panel. Mobile device connection is now possible via NFC (Near Field Communication) and Bluetooth LE (Low Energy)*1 technology. The connection will enable mobile features*2 such as pairing, print, scan, and user authentication. To execute these features, simply touch your device to the Mobile Touch Area then the PageScope Mobile application will do rest of the work.



*1 Optional Device Connection I/F Kit EK-609 is required.

*2 Android devices must be installed with Android 4.4 or later and NFC antenna that supports HCE (Host Card Emulation). For the iOS devices, iPhone4s or later, 3rd generation or later iPad and iPad mini are compatible with Bluetooth LE.

(The user authentication Bluetooth LE feature for the bizhub 367 series will be available in fall 2015).

Standard web browser

The multi-touch UI in the operational panel can be used to display and print out web page contents. It is convenient for print required portions of PDF files that can be viewed on websites, or to print maps for places you are about to visit.

Wireless LAN (AP mode) support

The MFP becomes a wireless LAN Access Point*3 to allow direct wireless connection between mobile devices and bizhub. Devices brought into the office will be able to directly connect with bizhub and are securely separated from existing company LANs. PageScope Mobile will enable more convenient use, as wireless set up can be completed between a mobile device and bizhub simply by reading the QR code that is displayed on the machine panel.

*3 Optional Upgrade Kit UK-212 and Device Connection I/F Kit EK-608 are required.

Wireless LAN (AP mode) connection image



* In AP mode (base unit), simultaneous connections can be made with up to 5 devices.

QR code display screen



To connect instantly without print drivers to the industry standard mobile technologies

AirPrint

Apple's standard printing system compatible with iOS 4.2 and Mac OS 10.7 or later. A compatible printer on your wireless LAN can be used.



Konica Minolta Print Service

Print directly to bizhub via a wireless LAN from Android 4.4 or later installed devices.



Mopria Print Service

Wireless printing technology provided by Mopria Alliance. Allows you to print from devices installed with Android 4.4 or later.



PageScope Mobile

A genuine mobile print application offered by Konica Minolta. To allow usage of wide range of bizhub functions such as duplex print, security print, staple and punch.



Google Cloud Print

With the compatible software installed, you can print from any locations via the internet regardless OS or device types.



* Google Cloud Print Setup and Google account registration are required.

* Optional Upgrade Kit UK-211 is required.



Flexible and advanced security features to protect valuable information

Authentication on the MFP main unit

Authentication can be performed directly on the main unit. Detailed access control can be set up for each function including copy, print, scan, and fax*1.

*1 Optional Fax Kit FK-513 is required.

IC card authentication

To authenticate*2 with various types of IC card*3. The authentication method also compliance with SSFC (Shared Security Formats Cooperation) standard. Besides the IC card, authentication can also be performed with any Android devices*4 that equipped NFC antenna.



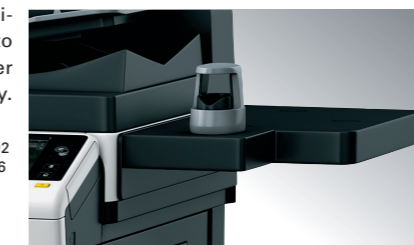
*2 Optional Authentication Unit AU-201S is required.

*3 Compliant non-contact IC cards include FeliCa (IDm), SSFC, FCF, FCF (campus), and MIFARE (UID).

*4 Requires Android 4.4 or later that supports HCE (Host Card Emulation) or PageScope Mobile for Android v4.1 or later.

Biometric authentication

Your finger veins becomes the most accurate authentication tool. The biometric authentication is easy to implement but offer very high-level security.



* Optional Biometric Authentication Unit AU-102 and Working Table WT-506 are required.

TPM (Trusted Platform Module)

Control the confidential information with a TPM (Trusted Platform Module) security chip which encrypts and decrypts any confidential data. The confidential information will be encrypted and stored only in the dedicated storage area in the chip. To avoid unauthorised reading from the outside.

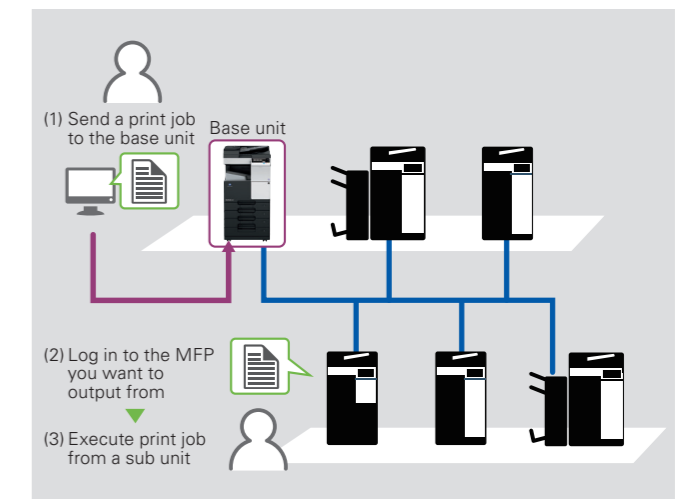
* Optional i-Option LK-115 v2 is required.

Server-less pull printing

Print jobs sent by user can be printed from any MFP in the office print group. To allows user to build a server-less pull printing system easier and with low introduction cost.

* A pull printing system consisting of a maximum of 10 MFPs can be created. It is necessary that all corresponding MFPs be in the same network.

* Optional i-Option LK-114 and Upgrade Kit UK-211 are required to be installed to each of the MFP.



ID & Print

If user set a password in the printer driver screen before execute the print, the print data will be stored in the HDD of the MFP and will not be printed at MFP until the same password is entered on the MFP operation panel. This function is useful when printing confidential documents or to restrict the receipt of outputs only to specific user.

