

PRODUCT GUIDE

Ver.1.0

Last updated 2019/04/05



bizhub

306i/266i/246i/226i

Monochrome
multifunctional
printer

A3

306i **30** BW
PPM

266i **26** BW
PPM

246i **24** BW
PPM

226i **22** BW
PPM

Note: For A4 output (landscape orientation)

Creation Department DX Branding Division
Konica Minolta, inc.

1 Hardware

This section explains the new functions and enhancements of the hardware.

Hardware Design Improvement	3
Operating Panel Improvement	4
Adoption of a Universal Design	5
Adoption of a High-speed SSD	5
System Performance Improvement	6
Solution Performance Improvement	7
Improvement in Supported Papers	7
Installation of a High-speed ADF	8
Improvement in Power Saving Measures	8

2 GUI / Software

This section explains the new functions and enhancements of the software and its GUI.

Adoption of a New GUI	9
Improvement in GUI Operability	11
Improvement in Screen Transition when System Resources are Insufficient	12
Adoption of a Voice Recognition Function using Smart Speakers	12
Adoption of an Electronic Correction Function for Scanned Images	13
Improvement in Printed Image Quality	13
Improvement of CAD Data Printing Speed	14
Adoption of a Function that Transfers Fax to the SMB Shared Folder	14
Coordination with Mobile Devices	15
Obtain Update Information from Multiple Servers	16
Supports Importing/Exporting of Settings	17
Conformity with Mopria Standards	17
PCL Driver Is Equipped with an Automatic Trapping Function	18
Improved Compact PDF File Creation Function	18
Carbon Copy Function Supports the Number of Copies Setting	19
Pre-installed MarketPlace Application	19

3 Security / Authentication

This section explains the new functions and enhancements of the security and authentication functions.

Adoption of a Virus Scan Function	20
Strengthening Wireless LAN Security	21
Adoption of TLSv1.x Elliptic Curve Cryptography	22
Abolition of Vulnerable Protocols in IPsec Communication Settings	22
Important Security Setting Items Grouped in One Location	23
ID & Print Function	23
Adoption of HTTP/2 over TLS	24
Improvement in Displaying the Certificate Error	24
Convenient and Secure Authentication Function	25
Adoption of IC Card Authentication	25

4 Maintenance / Environment

This section explains the new functions and enhancements in relation to the machine's maintenance and environment.

Improvement of Energy-saving Functions	26
Considerations for the Natural Environment	27

5 Specifications & Options

This section explains the machine's specifications.

Product Specifications	28
------------------------	----

About this Product Guide

Applicable devices

This Product Guide is applicable for the below devices.
bizhub 306i/266i/246i/226i





Precautions for use of this document

This document is used only in the KONICA MINOLTA Group and sales representatives.
Reproduction of the information to the public is strictly prohibited.

The data mentioned have been measured in-house, therefore cannot be guaranteed and should only be used as reference data.
Also, images used in this document are sometimes not those of bizhub 306i series.

Explanatory notes

The following marks indicate the functions and features of the bizhub 306i series.

Graphic symbols	Descriptions
	Newly equipped function
	Function enhanced from the former machine
	Function indicated in the Sales Point Tool
	Function that requires an option



1. Hardware

This section explains the new functions and enhancements of the hardware.

Hardware Design Improvement



Introduction to the Product Concept 'Simple & Secure'

In recent years, business processes have become complex and individual working styles have also diversified. The use of cloud services is also increasing, and customers are demanding more simple and reliable products.

For customers, digital multifunctional printers (MFPs) are just a means of supporting their business processes.

A lot of them want to efficiently use the MFPs, so as to devote the excess time to other tasks.

The product concept of the bizhub 306i series is to supply highly functional, simple, and secure solutions to meet the needs of these customers.

Konica Minolta MFP: Design & Identity

It features a unified design for the A3 machine, A4 machine, and Workplace Hub, and an exterior that is suitable for the next-generation Konica Minolta MFP.

Adoption of a Round-shaped Design

The adoption of round-shaped case conveniently fits in the office environment.



Operating Panel Improvement



Adoption of a Tablet-like Operating Panel

The machine uses a large 7-inch operating panel screen with excellent visibility. With the resistive touch panel, the operation of the panel is easy for users who are accustomed to using tablets and smartphones.



Adoption of a colour screen

With the colour touch panel, the amount of information that can be displayed is much greater compared to the monochrome screen in former devices.

Operating Panel Improvement



Less hard keys

Minimal hard keys and LEDs have been provided on the operating panel to make the operations simple.

Former machines



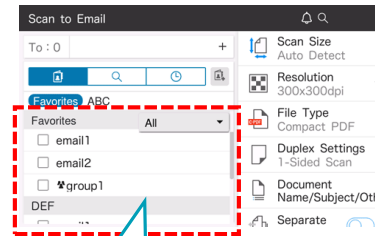
5-inch monochrome LCD

bizhub 306i series

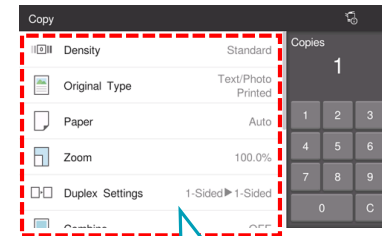


7-inch colour touch panel

To adapt to the times, the conventional hard keys including Start key have been replaced with soft keys on the screen.



Registered recipient keys



Copy setting keys

Adoption of a Universal Design



Adoption of an Optional Keypad

The numeric keypad has been moved from the operating panel to the optional keypad.

The operating procedures are based on conventional hardware buttons, providing a universal design that takes into consideration users who are not used to touch panel operations.



Required options KeyPad KP-101



Adoption of a High-speed SSD

Adoption of a High-speed SSD for Storage

For the bizhub 306i Series, a 256GB SSD (Solid-state Drive) is available as an option. A high-speed SSD (Solid-state Drive) has been adopted for storage.

Unlike a hard disk where data is read and written by rotating a magnetic disk (platter) and moving a magnetic head, the data is written electronically onto the flash memory in the SSD.

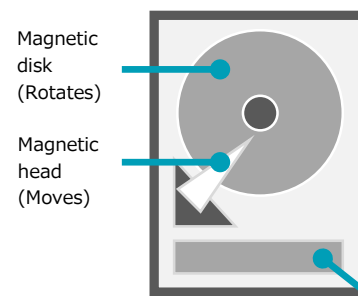
The data read and write operations in the SSD can be done quickly due to the involvement of minimal mechanical operations.

It can also withstand powerful vibrations, with a shock resistance that is high as compared to hard disks.

Functions	Benefits
Quick data read/write operations	Improved system response speed
Able to withstand powerful vibrations	Improved shock resistance
Few mechanical operations	Improved shock resistance and noise reduction

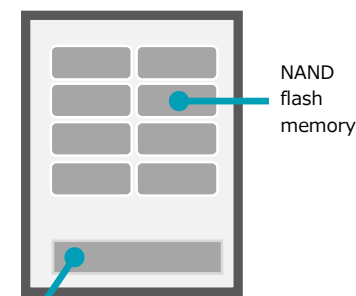
Hard disk

Many mechanical operations



SSD

Electronic reading and writing of data



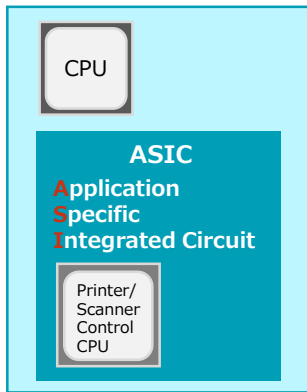
Required options Expanded Memory Unit EM-907



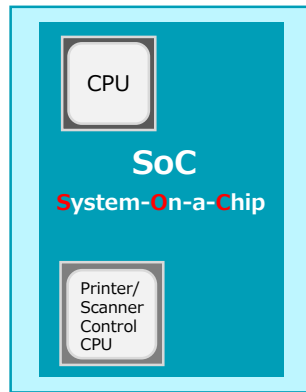
Adoption of an SoC

An SoC (System-On-a-Chip), which integrates the CPU and the multiple modules needed for system control in a single chip, has been adopted. The processing power in system control, compression and expansion of image data, and the input/output of image data is improved by the integration of multiple modules and the CPU in a single chip. The recovery time from start-up time and power saving mode has been reduced as well.

Control Board of Former Machines



Control Board of the bizhub 306i Series



Functions	Benefits
Improved performance using a single chip	Reduced time for job processing
Reduced start-up time	Improved MFP performance rate Reduced maintenance cost
Reduced power consumption	Contributes to energy saving

Benefits of an SoC (System-On-a-Chip)

- In general, an SoC has the following benefits:
- Miniaturization: Miniaturization is achieved as the mounting of multiple modules is not required to be separate, saving a lot of connector spaces.
 - Speeding up: Speeds up processes by reducing the time lag of signals between modules.
 - Low power consumption: Lowers power consumption by reducing the number of connection terminals between modules.
 - Low cost: The cost of the whole product is reduced by the miniaturized board, simplified tests, and reduced number of breakdowns.



Adoption of a High-performance Quad-core CPU

The adoption of a high-performance CPU has improved the overall performance of the system.

The bizhub 306i Series uses the “Cortex A72 CPU Quad Core” processor. The CPU of the former machine was a 500 MHz single core, while the CPU of the bizhub 306i Series is a 1.6 GHz quad core.

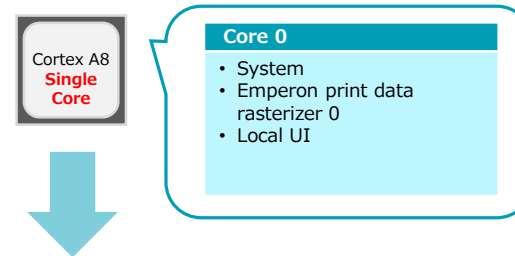
In each core, a different application processing is allocated by the Linux system call, and all are executed in parallel.

By increasing the number of cores in the CPU, the parallel processing of applications has become more efficient.

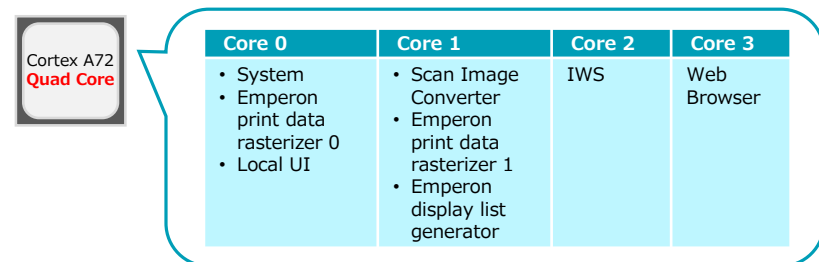
With the improvement in the processing efficiency, response rate, and reliability of application due to parallel processing, the productivity and serviceability of the MFP are increased.

Even if the MFP is performing basic functions such as scanning or printing, it can operate WPH and cloud applications without any stress.

Parallel processing with a single core



Parallel processing with a quad core



Solution Performance Improvement

IWS Performance Improvement

By improving the overall performance of the system, the performance of solutions such as IWS and MarketPlace is also improved.

- Provision of a standard 4GB memory: Improves the processing efficiency of large and complex data
- Quad-core CPU: Improves the efficiency of parallel processing of applications
- Provision of a high-speed SSD: Improves data input/output performance related to storage

We are promoting the use of these services as they easily work with MFPS and external and cloud services.

Functions	Performance Improvement
Python script benchmark test	1.8 times that of bizhub 367
bizhub Connector G-1 (IWS application operating Google drive)	1.5 times that of bizhub 367

Required options Expanded Memory Unit EM-907

Improvement in Supported Papers



Adoption of plain paper weight segmentation and 'Plain paper+'

'Plain paper+' (weighing 24-3/16 lb to 27-15/16 lb (91 g/m² to 105 g/m²)) has been added to the paper types.

Previously, the weight of 'Thick 1' was **24-3/16 lb to 31-15/16 lb (91 g/m² to 120 g/m²)**.

From this range, paper with a weight of **24-3/16 lb to 27-15/16 lb (91 g/m² to 105 g/m²)** makes up 5% of the paper used in offices.

For the bizhub 306i Series, paper with the weight that is often used was separated from 'Thick 1' and defined as 'Plain paper+'.

Former machines		bizhub 306i	
Plain paper (up to 23-15/16 (90 g/m ²))	30 ppm	Plain paper (up to 23-15/16 (90 g/m ²))	30 ppm
Thick 1 (24-3/16 lb to 31-15/16 lb (91 g/m ² to 120 g/m ²))	10 ppm	Plain paper+ (24-3/16 lb to 27-15/16 lb (91 g/m ² to 105 g/m ²))	10 ppm
Thick 1+ (32-3/16 lb to 41-3/4 lb (121 g/m ² to 157 g/m ²))	10 ppm	Thick 1 (28-3/16 lb to 31-15/16 lb (106 g/m ² to 120 g/m ²))	10 ppm
		Thick 1+ (32-3/16 lb to 41-3/4 lb (121 g/m ² to 157 g/m ²))	10 ppm

Available trays

Paper Type	Available trays
Plain paper+	Bypass Tray: 20 sheets Tray 1: 20 sheets
Thick 1	Bypass Tray: 20 sheets Tray 1: 20 sheets

Installation of a High-speed ADF



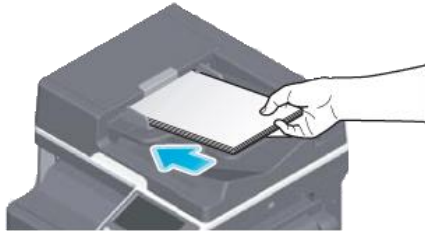
The reversing automatic document feeder was optional in former devices, but is a standard built-in device on bizhub 306i (optional in bizhub 266i/246i/226i).

Improved single-sided scanning speed

The single-sided document scanning speed of the ADF has been improved. (Monochrome/Colour, 300dpi: 55 sides/min)

Automatic double-sided document scanning

Double-sided document scanning can be performed with just a single operation if the reversing automatic document feeder is used. After scanning the front side of the double-sided document, the device automatically flips the document to scan the back side as well.



Required options Reverse Automatic Document Feeder DF-633

Improvement in Power Saving Measures

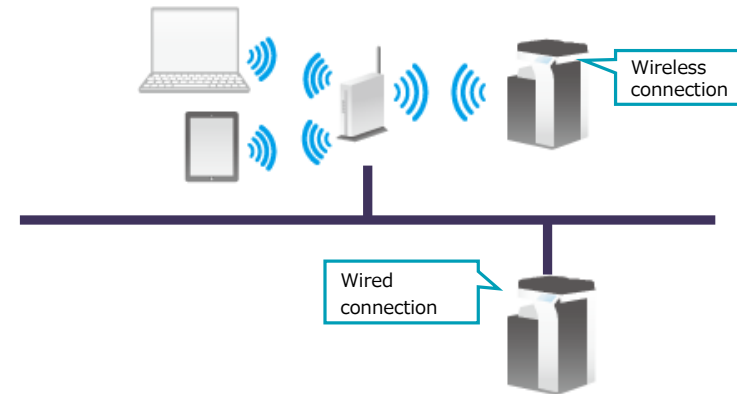


Adoption of Returning to ErP Mode from a Wired Network

Even via a wired network, returning from the highly power-saving ErP mode is possible.

As the network connection is disabled in ErP mode, the PC on the network cannot print or configure Web Connection settings. Hence, it is necessary to send a magic packet from the PC or mobile device on the network and restore the MFP from ErP mode in advance.

The flexibility of operating in the power saving mode according to the user's network environment improves user satisfaction.





2. GUI / Software

This section explains the new functions and enhancements of the software and its GUI.

Adoption of a New GUI



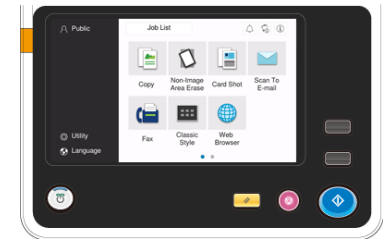
A new GUI with a simple design has been adopted for the operating panel.

Integrated GUI Design

The GUI design is the same in the A3 and A4 machines.

As the basic operations are the same, the user can easily operate the A3 and A4 machines.

Even if the A3 and A4 machines are placed in the same office space, they can be used properly according to the needs of the user without worrying about their differences.



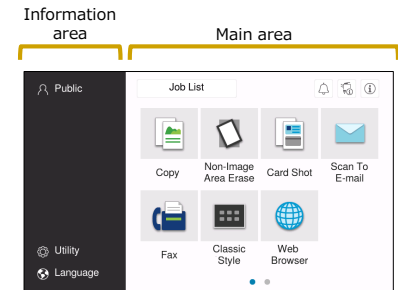
Introduction of the Home Screen and the Standard Screen

A "Basic style" with a simple colour theme that has excellent visibility has been adopted. Simple operability has been realized by narrowing down the displayed functions and reducing screen transitions.

<Home screen>

Broadly divided into "Information area" and "Main area".

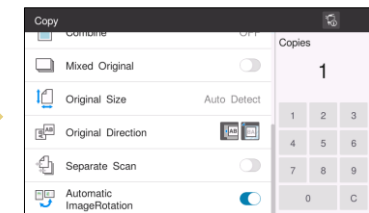
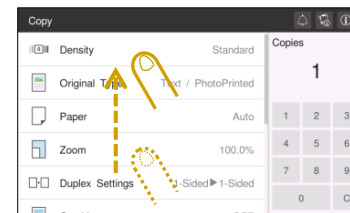
- Information area:
Displays the logged in user's name, ID button, and settings menu button.
- Main area:
Allows the user to access functions such as copying, faxing, and scanning.



<Copy screen>

The layout has been redesigned such that the user can accomplish the desired task without doing multiple screen transitions.

- Narrowed down functions: Carefully selected functions that are frequently used in offices are displayed.
- Settings pop-ups: Having minimum screen transitions allow users to concentrate on the desired tasks.
- Touch scrolling: Users can touch the screen to scroll and operate it like a tablet.



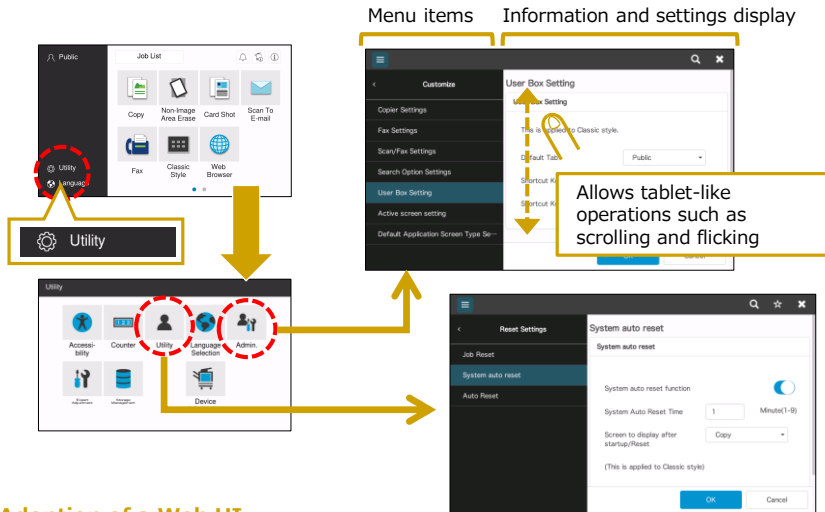
Adoption of a New GUI



Introduction of the Settings Menu

The utility screen of the settings menu and the administrator settings screen have been redesigned.

With the new Web UI, users who are familiar with how tablets and PCs work can easily understand and intuitively operate the UI.



Adoption of a Web UI

A Web UI (Web User Interface) based on the Chromium web browser has been adopted for the operating panel. The use of Web technologies such as CSS (Cascading Style Sheets) and JavaScript allow the interface to have flexible and expressive screen display settings.

Basic functions such as copying and faxing can be carried out the same way as in smartphones and tablets. Further, the operability of the settings menu screen is the same as that of the conventional Web Connection.

What is Chromium?

Chromium is an open-source web browser project. Google Chrome, the web browser which currently holds the highest share in the market, was derived from Chromium and was later updated with its own functionalities. In addition to being used as a base for other famous web browsers such as Opera, Chromium is also widely incorporated in equipment.

The Chromium Projects - Official Website (English)
<https://www.chromium.org/Home>

Adoption of a New GUI



Adoption of Widgets

The new GUI allows the use of widgets.

The status of the machine is displayed in an easy-to-follow format: the number of documents for ID & Print, the amount of paper remaining in each tray, etc.

The burden on the user is reduced as there is no need to use the operating panel to know the device status.

Period of provision When the high-end models of the bizhub C360i Series are released

Improvement of the Customization Method for the Default Mode Values

In the new GUI, the default values for copying and faxing can be set from their respective mode screens.

In former machines, the default values of all modes cannot be changed and must be individually set when using a function.

In the bizhub 306i Series, the default value can be directly changed from each mode.

By reducing the number of operating steps required for setting the default value, the costs for setting user preferences can be lowered.

Improvement in GUI Operability



Adoption of a GUI Switching Function

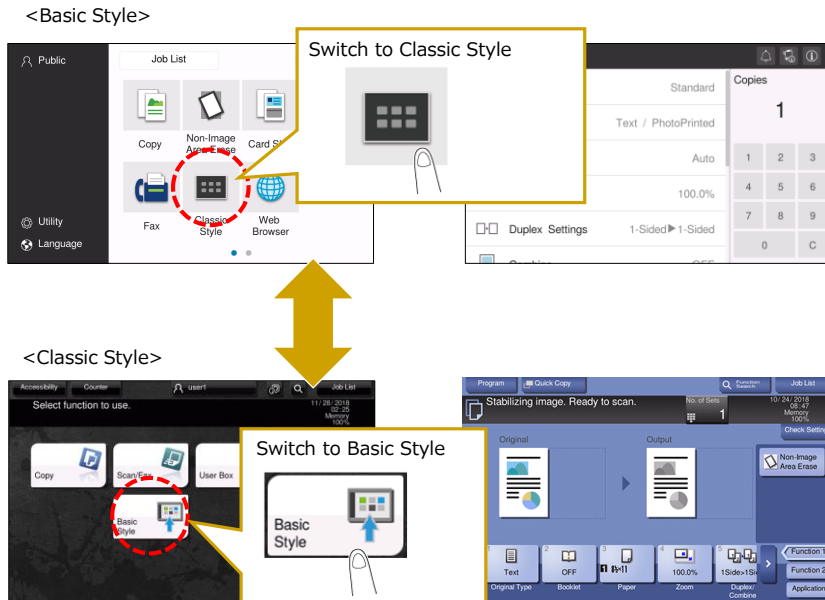
The screen style can be changed as required.

- **“Basic Style”** :
Can carry out the desired tasks using minimal steps that are simple and easy to understand
- **“Classic Style”** :
Conventional style with intricate settings and advanced functionalities

The style can be changed to match the user’s objective and proficiency: “Basic Style” for quickly carrying out ordinary tasks or “Classic Style” for carrying out settings and operations that are seldom performed.

With the Basic Style that offers simple operability—thereby reducing the time required to operate—and the Classic Style that provides access to conventional functions, the work efficiency of the user is enhanced without having to compromise on output quality.

The style can be easily switched using the button on the Home screen.



Improvement in GUI Operability



Customization matching the environment using the web browser and the IWSfunction

The web browser and the IWS function are standard built-in features. In addition to printing content on the web, it is now easier to make customizations that match the operating environment such as a unique UI and cloud linking

Browsing and printing content on the internet or intranet, as well as uploading of scanned data and other functions are supported in the web browser.

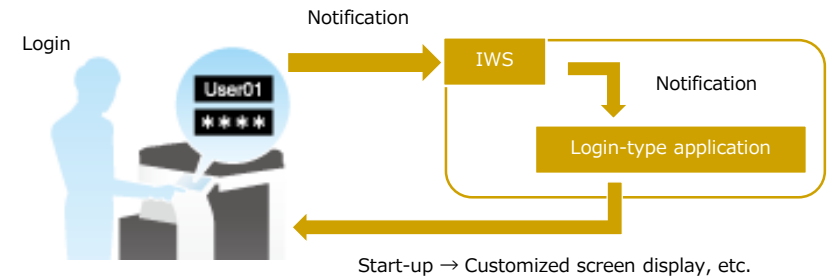
Enabling the web browser allows the user to use the IWS function. With the IWS function, the user can also limit functionality in conformity with the properties of their required home screen customization*.

Adoption of a Login-type IWS Application

An IWS application can now be created with start-up preferences for the user’s operating panel such as switching to the user’s personalised home screen when logging in.

In the bizhub 306i Series, the IWS is notified of the user login into the operating panel, and then the IWS notifies the IWS application. Hence, the user login acts as a trigger for the launch of the IWS application.

This way, an IWS application with a higher value added can be provided.



Improvement in Screen Transition when System Resources are Insufficient



A warning is displayed on the operating panel before the user becomes unable to use the Fax function due to insufficient system resources (Resources Full status).

When system resources are insufficient, the user may not be able to send or receive faxes. In order to avoid this situation, a warning is displayed on the operating panel when system resources are about to be depleted (Nearly Full status).

The MFP can be used without worries as the problem can be resolved before the Fax function gets disabled.

A warning is displayed when the following system resources are in Nearly Full status.

Nearly Full Type	Nearly Full Condition	Action to be Taken on Receiving the Warning
Forced memory reception box	Number of documents in the box: 496 (when an SSD is installed) 146 (when no SSD is installed)	Delete or print documents in the box
Fax reception box	Number of documents in the box: 150 (when an SSD is installed) 90 (when no SSD is installed)	Resolve paper jams and depletion of consumables, and release the temporarily stored data in the Fax reception box
Confidential reception box	Number of documents in the box: 190 (when an SSD is installed) 90 (when no SSD is installed)	Delete or print documents in the box
Number of boxes	Total number of user boxes: 990 (when an SSD is installed)	Delete boxes
Paper usage	Total number of pages of documents in all boxes: 9,700 (when an SSD is installed) 146 (when no SSD is installed)	Delete documents in the box
Report box	Total number of pages of documents in the report box: 175 (when an SSD is installed) 75 (when no SSD is installed)	Resolve the root cause of the print error for the fax transmission/reception report, and delete the temporarily stored reports in the report box
PC-FAX reception box	Number of documents in the box: 190 (when an SSD is installed)	Delete or print documents in the box

Adoption of a Voice Recognition Function using Smart Speakers



The MFP has been equipped with a voice recognition function that uses smart speakers such as Google Home and Amazon Alexa*.

The MFP executes commands given to the smart speaker, e.g. "Copy" and "Scan". The number of copies and the transmission destination can also be specified.

The device can also make copies with pre-registered settings by giving the command "Copy using the usual settings".

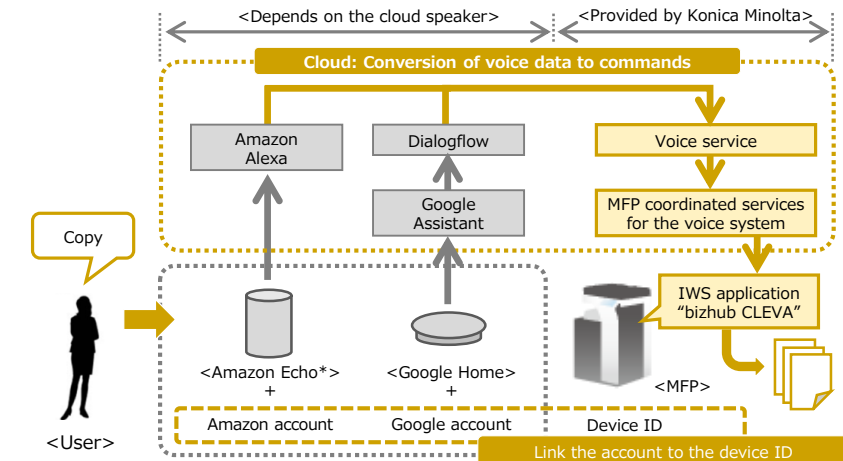
Using voice recognition reduces the time required to operate the MFP, as well as the costs for learning the operations.

A universal design is also supported through the provision of methods other than those on the touch panel.

Functions	Benefits
Touch operations for the operating panel are not required	Reduced time for operation
Learning the layout of the operating panel is not required	Reduced costs for learning the operations
Operating methods besides touching the operating panel are provided	Compatible with the universal design

Voice recognition using a smart speaker is performed in the following steps.

1. User logs in to MFP and launches the IWS application for voice recognition
2. User gives a command through the smart speaker
3. Smart speaker sends the voice data to the cloud
4. The voice data is converted into a command that the MFP understands in the cloud
5. The command is sent to the IWS application, and the job is executed by the MFP



*There are plans to make it compatible with Amazon Echo at a later date

Adoption of an Electronic Correction Function for Scanned Images



An electronic correction function has been adopted for tilted images scanned with the ADF. In former machines, tilted images are mechanically corrected when they are fed (mechanical correction).

In the bizhub 306i Series, along with the mechanical correction, another correction function that detects the tilt in the image has been added (electronic correction).

Having both mechanical and electronic correction functions, it can greatly reduce the tilt in an image.

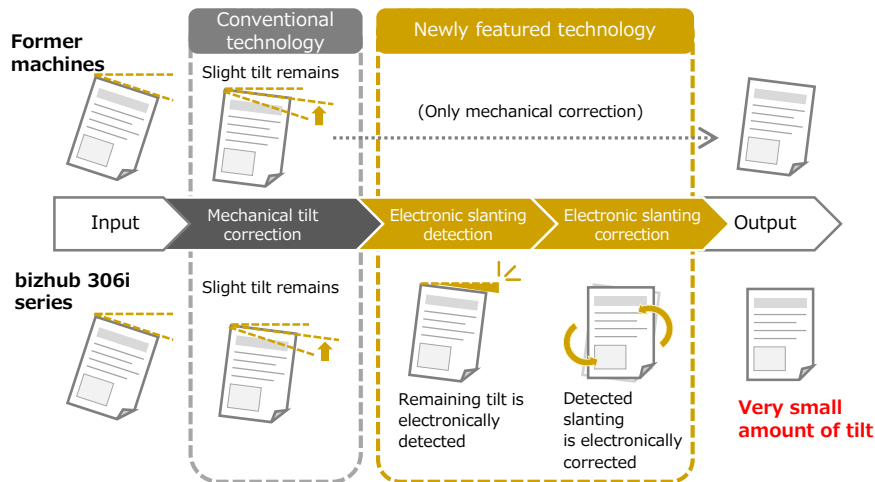
Either the tilt correction accuracy or the reading speed can be prioritized in the administrator settings. [Environment settings]-[ADF paper slanting correction settings]-[ADF paper slanting correction settings]

- **[High]:** Corrects the tilt with high accuracy.
- **[Low]:** Prioritizes document reading speed.

The quality of the scanned image can be enhanced depending on the business requirement.

Functions	Benefits
Electronic correction of image tilts	Improves quality of scanned images
Customizable operation modes	Can be matched with business requirements

Mechanical correction and electronic correction

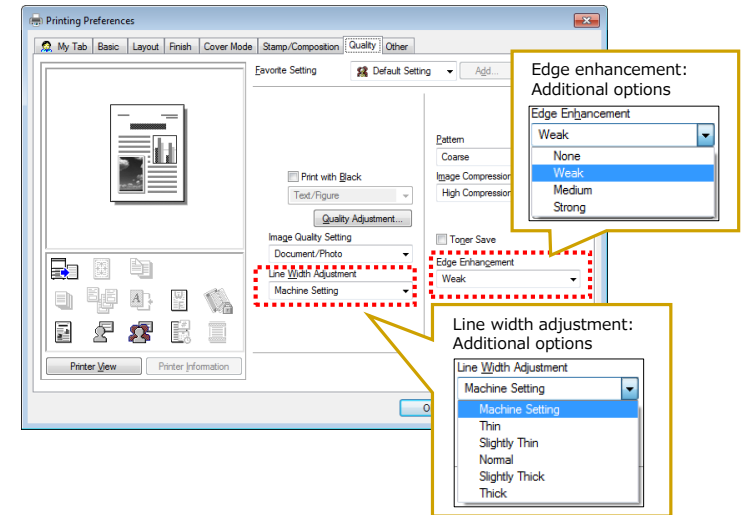


Improvement in Printed Image Quality



The printer driver has been improved to increase the quality of print images.

	Former machines	bizhub 306i series
Line width adjustment	No setting	Has been added in the settings
Edge enhancement	No setting	4 options are provided (None, Weak, Medium, Strong)



Improvement of CAD Data Printing Speed



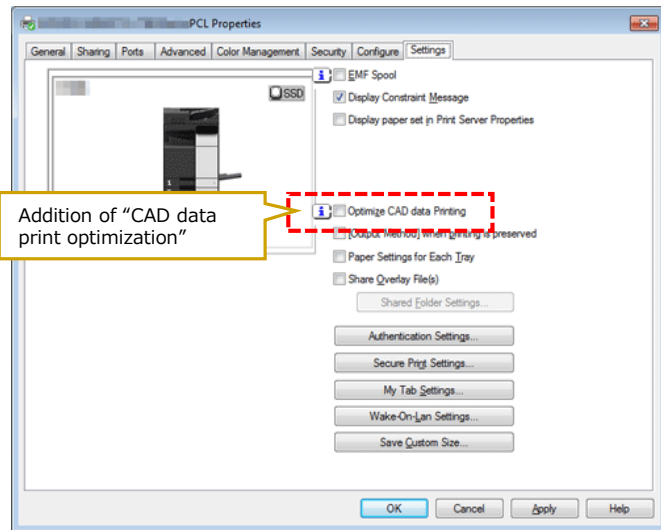
By optimizing CAD print data, printing can now be done at a higher speed.

The “Optimize CAD data Printing” option has been added to the PCL printer driver properties for Windows.

If the check box is ticked, unnecessary coordinate data and drawing commands in CAD data will be deleted, and print data will be optimized.

This way, the printing of CAD data becomes more efficient.

Driver supported Windows PCL driver



CAD data optimization details

The CAD print data is optimized as follows:

1. Reduction of drawing instruction data from the application
 - As much as possible, replace “curved line that can be shown with a straight line” with “draw straight line command”
2. Optimization of the driver drawing process
 - Thin out the coordinates not required in drawing a straight line without affecting the drawing result
 - Delete unnecessary drawing commands that will not be displayed in the print result

Adoption of a Function that Transfers Fax to the SMB Shared Folder



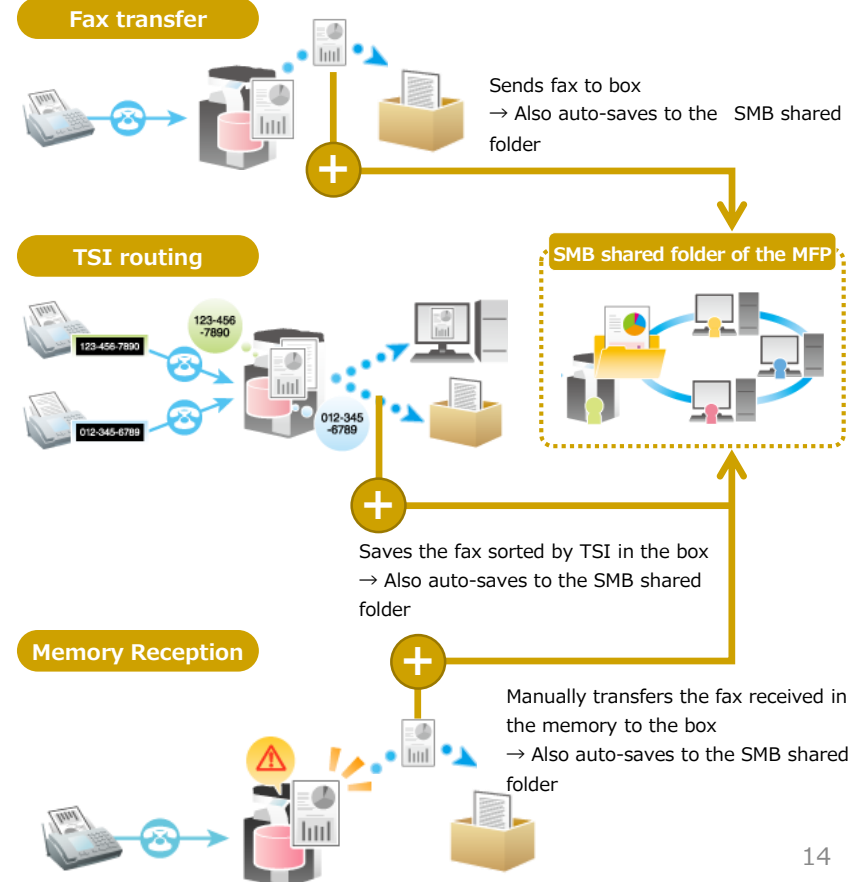
Received faxes can now be transferred to the SMB shared folder of the device.

The following functions can be performed:

- Fax transfer
- TSI routing
- Manual transfer during memory interception

By increasing the number of fax-receiving terminals, we can promote paperless communication.

Required options Fax Kit FK-513, Expanded Memory Unit EM-907



Coordination with Mobile Devices








Printing is, of course, possible wirelessly from mobile terminals. Printing and login can be easily performed by simply holding the terminal over the mobile touch area. The iOS, Android and Windows 10 Mobile OS's are also supported. The bizhub Remote Access app can be utilised to use the address book on a mobile device, and scanned data can also be saved on a terminal by the same operation as on the unit.

Functions	Benefits
Various OS's are supported	Stronger coordination with mobile devices to provide an advanced work style
Various mobile print technologies supported	
NFC and Bluetooth LE communication supported	
Remote operation by bizhub Remote Access	

Required options Local Interface Kit EK-613 (required to use Bluetooth LE functions)

Supported mobile print technology

Various mobile print technologies developed for mobile terminals are supported to achieve a smarter work style. Flexible methods of use are possible to suit the environment user are using, such as Google Cloud Print which enables output outside of the office and Mopria which is compatible with various printers made by various manufacturers.

	iOS	Android	Windows 10 Mobile
 AirPrint*	○	—	—
 Konica Minolta Mobile Print	○	○	○
 Mopria Print Service	—	○	—
 Google CloudPrint	○	○	—
 Konica Minolta Print Service	—	○	—

* Available after Apple certification

Coordination with Mobile Devices



NFC-based coordination with Android terminals

A mobile touch area compatible with terminals that support NFC (Near Field Communication) is provided under the operation panel. The following operations are possible by holding terminals installed with Konica Minolta Mobile Print over the mobile touch area.



- **Pairing with the unit ***
Can pair immediately with the MFP in front of user.
 - **Logging in to the unit**
If user authentication is set, the terminal can be swiped to log in to the unit.
 - **Printing/scanning ***
Konica Minolta Mobile Print allows files to be selected for printing. Scanning can also be executed by holding the terminal over the mobile touch area.
- * Wireless LAN environment is required.

Bluetooth LE-based coordination with iOS terminals

Terminals installed with Konica Minolta Mobile Print can be connected to MFPs nearby.



- **Searching and registering MFPs ***
MFPs nearby can be searched for and registered by simple operation from the terminal.
 - **Logging in to the unit**
If user authentication is set, units nearby can be logged in to.
 - **Printing/scanning ***
MFPs registered to Konica Minolta Mobile Print can be selected for printing and scanning via a wireless LAN.
- * Wireless LAN environment is required.

Required options Local Interface Kit EK-613 (required to use Bluetooth LE functions)

* Konica Minolta Mobile Print for iOS, Android, and Windows 10 Mobile can be downloaded free of charge from the App Store, Google Play, and Microsoft Store respectively.

Coordination with Mobile Devices



Functions possible by bizhub Remote Access

bizhub Remote Access not only simulates the unit's control panel but also allows the user to use various other tablet coordination unique functions. The connection setting (On/Off) can be selected on the unit if a connection is established by Remote Access while this device is being operated.

- **Return from power save mode**
- **Organization of data in box**
- **Management of unit settings**
- **Keyboard Link**
- **Up to three tablet terminals can be managed**

- **Scanned data can be converted to PDFs**

In the unit, scanned data is converted to PDF or CPDF, and can be saved directly on the mobile terminal and Google Drive. Searchable PDF can also be created using the OCR service of Google Drive.

*In iOS, scanned data can be saved only to Google Drive.

- **Coordination with address book in mobile terminal**



Addresses in the address book in mobile terminals can be used as they are as fax/scan addresses.

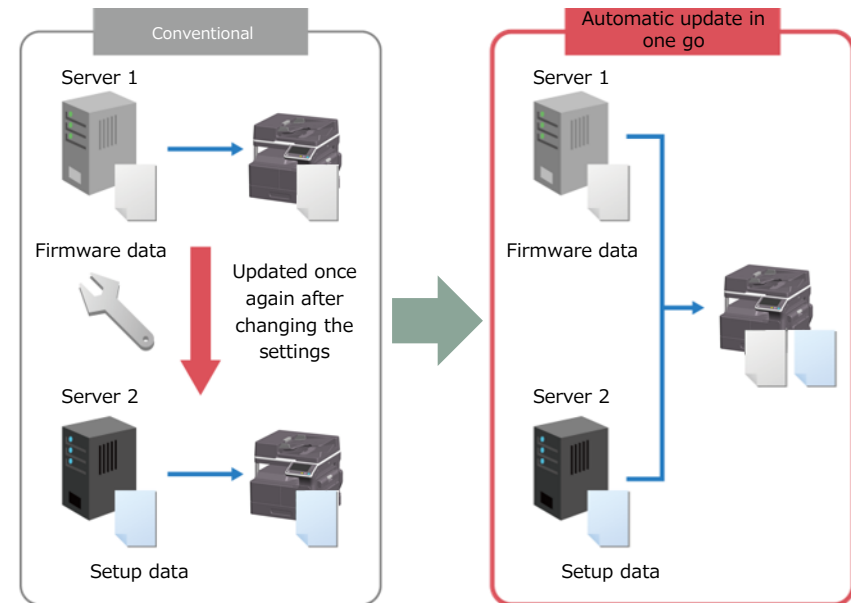
Obtain Update Information from Multiple Servers



Two servers can be set to distribute update information regarding the firmware and machine settings. By downloading from both servers as required, it is not necessary to switch between servers and this shortens the update process. The administrator can reduce the downtime during update.

Functions	Benefits
Dual servers can be set up for downloading firmware.	It is no longer necessary to change servers during update, and this has made the task of management and maintenance more efficient.
Data can be retrieved from both servers as required.	

Visualization of download of update information



To download two types of update information, the data was updated twice.

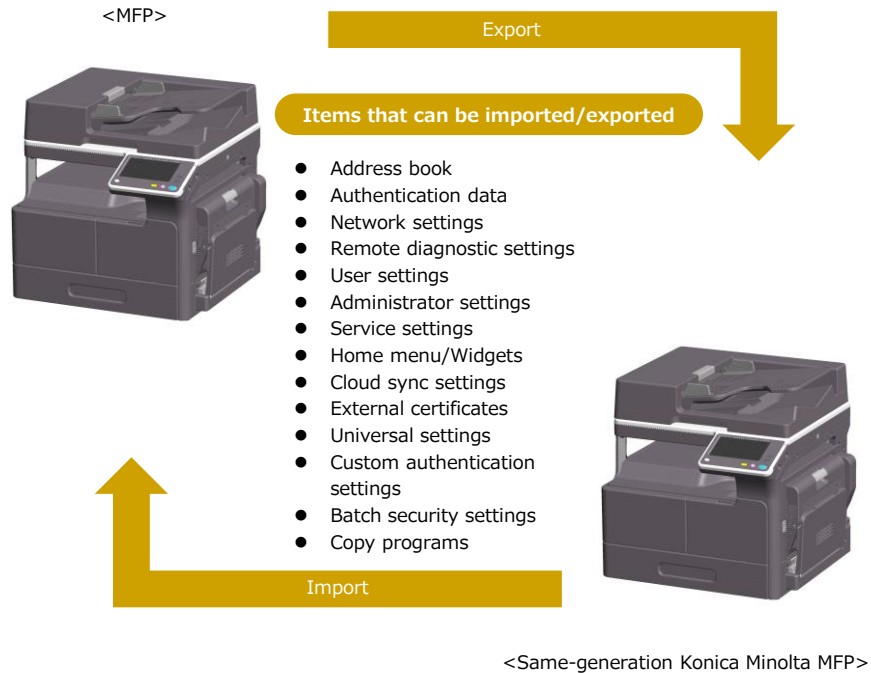
Update information is now separately obtained from dual servers and used for automatic update.

Supports Importing/Exporting of Settings



Settings can now be exported from the device and imported to another device.

Reusing the settings of a single MFP on several MFPs reduces setup costs.



Conformity with Mopria Standards



The machine is Mopria-certified (Scheduled for June 2019).

Mopria does not require installation of different apps for each manufacturer or model; it has standards that allow printing from an Android device or sending scanned data to an Android device.

Printers or MFPs that have been certified by the Mopria Alliance can easily print and scan using the apps provided by the Mopria Alliance.

As this device is Mopria-certified, it is possible to build a work flow that incorporates mobile devices regardless of the printer, even in environments where both Konica Minolta devices and other companies' devices are used.

This makes it very easy to introduce Konica Minolta devices into office environments where other companies' devices are already installed.

The device uses the following apps provided by the Mopria Alliance:

- **Print function:** Mopria Print Service app (Google Play)
<https://play.google.com/store/apps/details?id=org.mopria.printplugin&hl=en>
- **Scan function:** Mopria Scan app (Google Play)
<https://play.google.com/store/apps/details?id=org.mopria.printplugin&hl=en>

PCL Driver Is Equipped with an Automatic Trapping Function



The PCL driver is equipped with an “automatic trapping” function that automatically corrects the colour shifting of text. Since white areas caused by misregistration can be corrected in the same way whichever driver is used, a beautiful print finish can be obtained regardless of operating system environment.

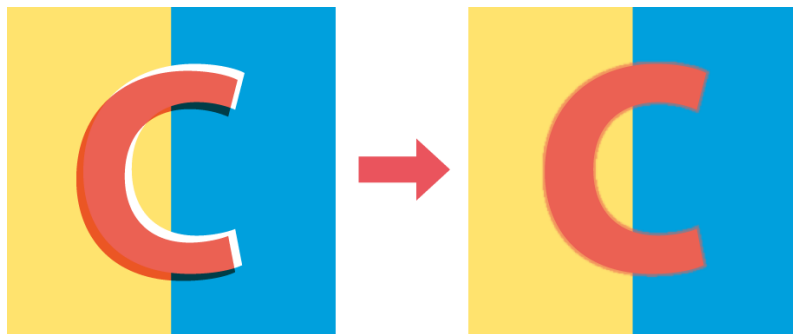
Functions	Benefits
The PCL driver is equipped with an automatic trapping function.	Colour documents can be printed with a more professional look.

Automatic trapping also supported by PCL driver

The automatic trapping function can also be used with the PCL driver instead of with only the PS driver. Even when text is placed on top of an image, a beautiful print finish can be obtained without white areas forming between the text and image.

What is the automatic trapping feature?

When colour shift occurs, none of the toners is transferred to the paper, which leaves white dropped out areas. White dropout is particularly conspicuous when deep coloured text is placed over a colour background. The “automatic trapping” feature pre-adjusts the boundary between colours to prevent white dropout from occurring.



Automatic trapping OFF

Automatic trapping ON

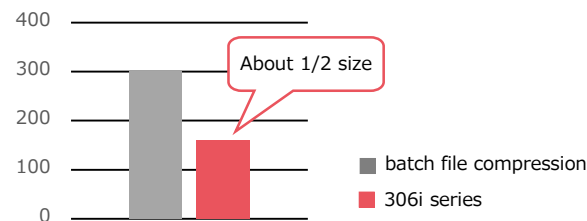
Improved Compact PDF File Creation Function



By accurately analyzing the text and image areas when creating a compact PDF file, it is possible to reduce the file size while also improving the image quality. In addition, by improving the memory and CPU performance, the processing speed was improved.

Functions	Benefits
Scanned file sizes are reduced	Smaller file size with superb image quality.
The image noise has been reduced and able to provide clear text and photo.	

Smaller file sizes compared with batch file compression



Improved throughput makes sharper and easier to read text and images

Thickening of letters and noise is considerably reduced. Text on photos can also be accurately processed.

batch file compression	306i series	batch file compression	306i series
batch file compression	306i series	batch file compression	306i series
CPDF v2	CPDF v3		

Carbon Copy Function Supports the Number of Copies Setting



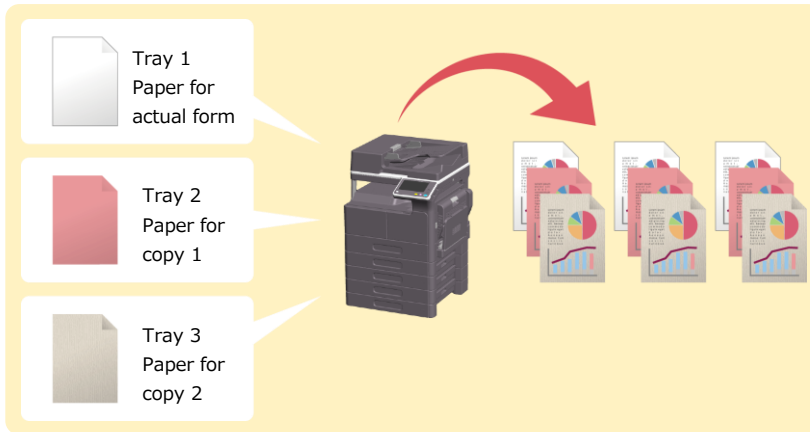
The carbon copy function supports the setting for the number of copies. User can get the “actual form” and a “copy” at the same time in a single printout.

This eliminates wasted time and shortens work time since user do not have to repeatedly go through the same procedure over and over again.

Functions	Benefits
Multiple sets of copies can be output.	Multiple sets of actual forms and copies are batch output, which helps improve work efficiency and shorten work time

Support of multiple copies by the carbon copy function

The carbon copy function of the bizhub 306i series supports the output of multiple copies. Just like with regular printing, the number of output copies can be specified. Multiple copies are output one set at a time starting from the tray with the smallest number.



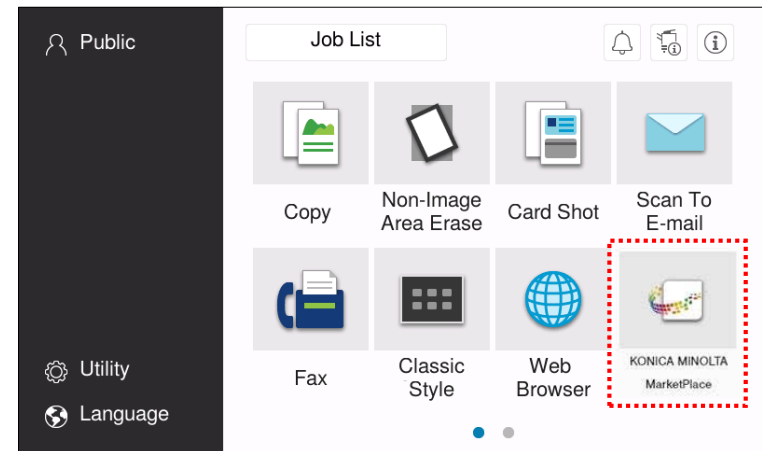
Pre-installed MarketPlace Application



The MarketPlace application is pre-installed and can be used immediately after setup has been completed.

Since MarketPlace can be used immediately after setting up the MFP, the costs required for setting up MarketPlace is reduced.

In addition, the hurdles in using MarketPlace have been reduced, and the application's efficiency has been enhanced.



- If the machine cannot be connected to the Internet, you cannot use MarketPlace. The setting for the MarketPlace icon on the standard Home menu can be set using the administrator settings screen so that the icon is not displayed.
- To use MarketPlace, an account is required.
- Create an account from <https://konicaminoltamarketplace.com/>.



3. Security / Authentication

This section explains the new functions and enhancements related to security and authentication functions.

Adoption of a Virus Scan Function



Virus scan can now be performed using the anti-virus engine “BitDefender”.

- Real-time scanning: Always monitors input and output data.
- Periodic scanning: Performs virus scan on the specified date or whenever required.
- Scan history display: Allows you to view the detected virus history and the performed virus scan history.
 - ✓ Risk log (detected virus history): Contains details such as error codes, time, and risk details.
 - ✓ Scan log (performed scan history): Contains the scan start/end time, and the scan results (good or bad).
- Checking for updates to the pattern file: When launched, it automatically checks for updates to the pattern file every four hours.

This reduces security risks such as information leakage due to virus infection.

Required option i-Option LK-116

BitDefender

“BitDefender” is an anti-virus software that holds a high market share in Europe.

It has the following features:

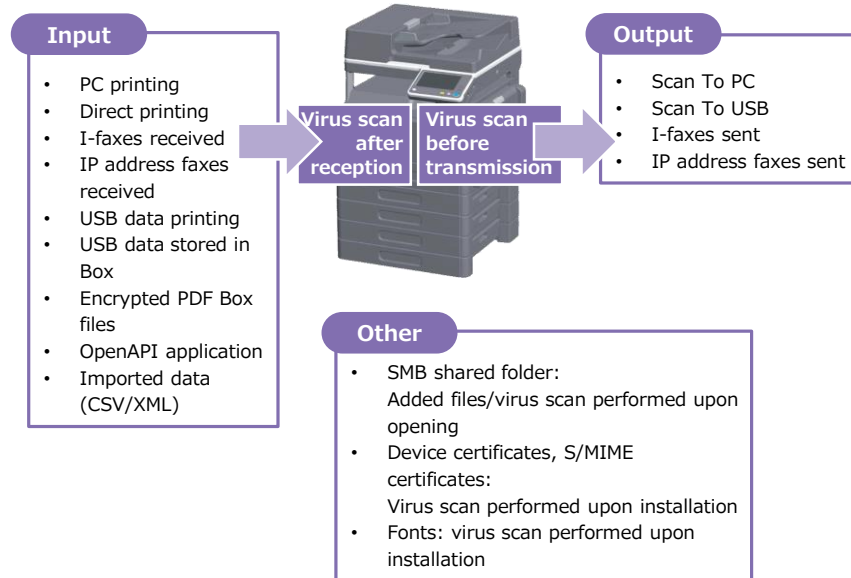
- Offers several products for businesses
- Offers a large variety of products, ranging from versions for servers to those for desktop computer
- Original “Heuristic Detection”: Does not perform matching with the pattern file; instead, possible virus behaviour is computed in advance to detect the virus

Adoption of a Virus Scan Function



Adoption of Real-time Scanning

The data exchanged between the MFP and the external environment is constantly monitored.



Process after Virus Detection

When a virus is detected, the file is automatically dealt with.

Process	Target
Deletion	Scan To PC, Scan To USB, I-faxes sent, IP address fax sent, SMB shared folder, imported data, OpenAPI application, device certificates, S/MIME certificates, font data
Printing	PC printing (normal printing), USB data printing, direct printing
Box storage	PC printing (saved Box data), I-faxes received, IP address fax received, USB To Box, encrypted PDF Box
Entry to the warning log only	Browsing data, files downloaded with a browser, IWS application

Strengthening Wireless LAN Security



The wireless LAN module has been changed to enable the security settings of the master mode.

Changed from the conventional "Broadcom BCM43566" to "Realtek RTL8812".

The following security functions have been strengthened by enabling support for the master mode from the conventional, simple Access Point mode.

- MAC address filtering: Only devices with a registered MAC address can be connected.
- Any Connect: Any Connect allows you to refuse connection requests by devices and prohibit unspecified and unidentifiable devices from connecting.
- Auto update of passphrase: The encryption key is automatically updated.

With these, the device can be set to reduce the security risks associated with wireless LAN.

Adoption of MU-MIMO

The newly mounted wireless LAN module "Realtek RTL8812" uses "MU-MIMO (multi-user MIMO)".

Even if multiple clients exist in the wireless LAN, speed reduction can be prevented with MU-MIMO.

MU-MIMO is a technology that makes communication more efficient when multiple wireless LAN clients are connected to one access point.

Normal MIMO (multiple-input and multiple-output (MIMO)) technology uses multiple antennas on the transmitting and receiving side to improve the quality of communication.

In MU-MIMO, MIMO technology is further developed. The beamforming technique is used to transmit signals to specific clients.

Since it is possible to communicate simultaneously with multiple clients, the communication speed reduction can be prevented even if multiple clients are connected to the access point.



MU-MIMO: Uses multiple antennas to communicate with multiple clients simultaneously

Adoption of TLSv1.x Elliptic Curve Cryptography



Elliptic Curve Cryptography (ECC) is supported for encrypted communication by SSL/TSL. Elliptic Curve Cryptography (ECC) is a “Cryptography based on the difficulty of “The Elliptic Curve Discrete Logarithm Problem (EC-DLP)”. It attracts the attention because it is faster than RSA cryptography as well as the same security can be realized with a shorter key. At the time of encrypted communication a key is shared between server and client. Also, in order to securely transfer the shared key, a server certificate with attached server's public key is used.

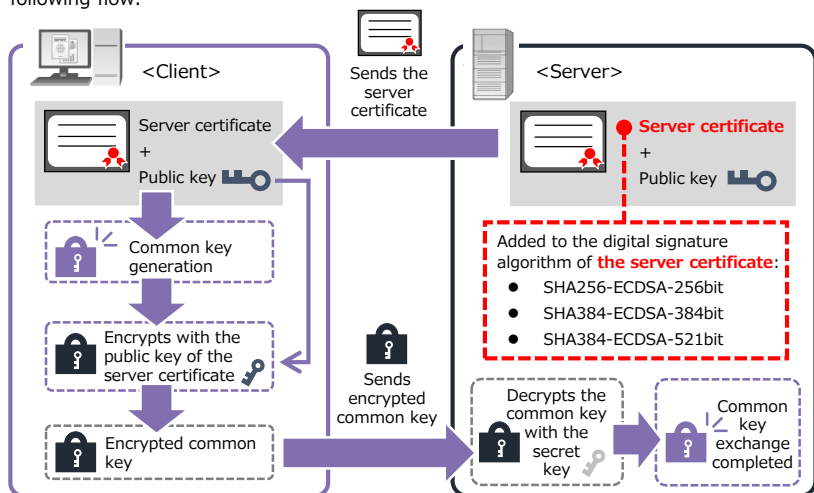
ECDSA (Elliptic Curve Digital Signature Algorithm) based on **elliptic curve cryptography** is used as a digital signature algorithm for this server certificate. Also ECDH (Elliptic curve Diffident–Hellman key exchange) is used as a key exchange algorithm. Elliptic curve cryptography is used in the following cases.

- When this device acts as client: It can communicate with the server which is using Elliptic Curve Cryptography
- When this device acts as server: It can create server certificates using Elliptic Curve Cryptography
- When creating and issuing a certificate: ECDSA can be selected as an encryption key type
- At the time of import/export of certificate: It supports certificates with ECDSA as an encryption key

In this way, the user’s demand of the highest security can be fulfilled.

Flow of Public Key Sharing

A common key required for the encrypted communication by SSL is exchanged with the following flow.



Abolition of Vulnerable Protocols in IPsec Communication Settings



Vulnerable protocols and encryption schemes are abolished in IPsec communication settings.

By removing vulnerability, now IPsec communication can be used more safely.

The following changes were made in Web Connection's [Network] - [TCP/IP Setting] - [IPsec] - [IPsec Setting].

Changed points	Corresponding location (In the [IPsec Setting] menu)	Impact on user
MD5 without support	[IKE], [SA]	When MD5 is used, it is necessary to change the settings in the algorithm such as SHA1.
No support to DES is provided when using ESP	[SA]-[IKE Setting]-[ESP Encryption Algorithm]	When DES is used, it is necessary to change the settings in the algorithm such as AES.
When using ESP, the settings without the authentication algorithm are not supported	[SA]-[IKE Setting]-[ESP Authentication Algorithm]	In the security protocol if ESP is used and if authentication algorithm is not specified, the settings of authentication algorithm such as SHA1 is necessary.
“Manual key” is not supported as key exchange method	[SA]-[Key Exchange Method]	When using the manual key, it is necessary to change the key exchange method to IKE.
The range settings of IP address is not supported (Instead, subnet specifications and unicast specifications are supported)	[Peer]-[Set IP Address]	<ul style="list-style-type: none"> • When a specific host is to be excluded from the subnet: Disable IPsec connection using IP filtering, etc. • When a specific host is to be added to the subnet: Specify IP address individually in unicast specification.
It is not necessary to specify TCP/UDP port or specify it individually	[Protocol Setting]-[Port No.]	<ul style="list-style-type: none"> • When protecting the entire traffic using only one IPsec session: It is not necessary to specify port number • When TCP/UDP session is to be protected individually: Individually set the port number to be used in the session.
When using AH, authentication algorithm “AES_GMAC” is not supported	[SA]-[IKE Setting]-[AH Authentication Algorithm]	When authentication algorithm “AES_GMAC” is used, it is necessary to change the the security protocol settings from AH to ESP.

Important Security Setting Items Grouped in One Location

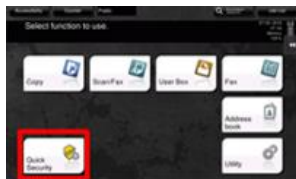


In order to avoid the serious risks associated with the use of the machine, the security items that are recommended to be set when the machine is installed are grouped in "Quick security" so that they can be set easily.

Functions	Benefits
"Quick security" for quickly setting important functions <ul style="list-style-type: none"> • Simple IP filtering • Administrator password • Password rules • Web Connection setting • Security Warning Display Setting • USB Enable Settings 	Stronger security urged to avoid serious risks

Quick security setup

In the default setting, "Quick security" can be launched for setup from the shortcut key on the main menu (Classic style). After the administrator password and password rules are set, shortcuts settings can be changed only by the administrator and shortcuts are no longer displayed. Start with the administrator setup.



Items that can be set by Quick security

- Administrator password

Administrator passwords that are often operated in their default settings are made easier to change, helping improve security.

- Password rules

Setting of simple password comprising eight characters or less, or leaving passwords not set is prohibited.

- Simple IP filtering

IP addresses that limit accessing of the MFP from a PC are automatically set to prevent illegal accessing.

- Web Connection setting

When Web Connection is not used, functions are set to OFF to prevent illegal changing of settings.

- Security Warning Display Setting

When the "administrator password" is not changed from its default setting or when "password rules" are not set to ON, an alert is displayed at a power ON, return from the power save mode, or return from an ErP auto power OFF. This is to raise the security awareness of the user.

- USB Enable Settings

The use of functions that use a USB port can be prohibited.



ID & Print Function

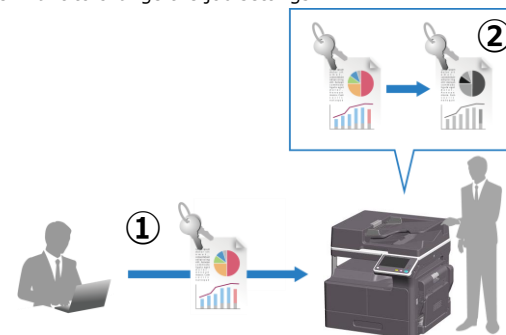


Print settings can be changed on the control panel even after an "ID & Print" job has been sent to the unit.

Functions	Benefits
"ID & Print" jobs can also be changed on the control panel.	Jobs can be changed with minimal trouble for higher job management efficiency

Changing print settings

Like documents saved to the box, the Print Setting screen is also displayed when "ID & Print" documents are printed. The various print settings can be changed on the unit's control panel when a job has been sent by mistake with the wrong settings or in other cases where user want to change the job settings.



1. Send "ID & Print" job

2. Print settings can be changed before printing

The main items that can be changed are as follows:

- **No. of Sets**
- **1-sided original/2-sided original**
- **Finishing settings**
- **Page print**

Adoption of HTTP/2 over TLS



It supports HTTP's new version "HTTP/2".

"HTTP/2" is a new version of HTTP protocol. Approved as a formal specification on February 17, 2015.

It improves the Internet connection and connectivity to the cloud environment with the introduction of the "Stream" concept that can process multiple requests/responses with a single TCP connection, and the "Server push" function capable of request/response processing with priority control and asynchronously.

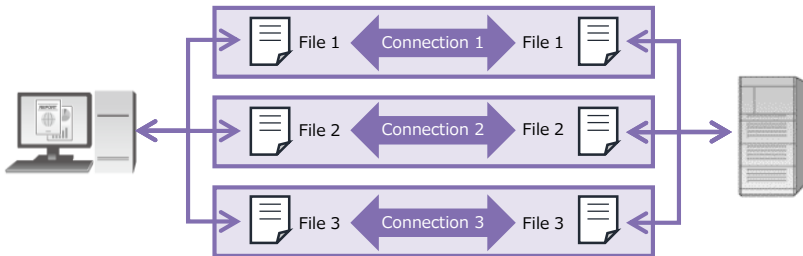
It supports HTTP/2 in major Web browsers (Google Chrome, Microsoft Edge, Safari, etc.), however this device is compatible with only HTTP/2 over TLS.

Also, it is necessary to enable communication by SSL/TSL to use HTTP/2 in this device.

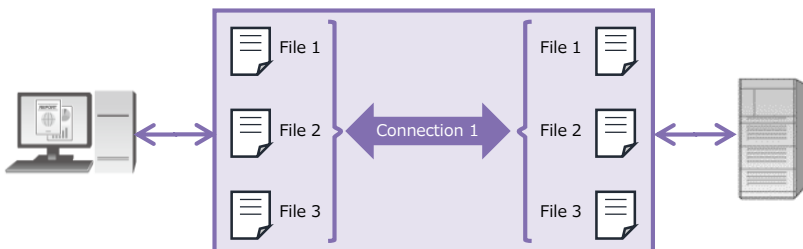
Since encrypted communication is mandatory, it improves the security when using a Web browser.

Difference between HTTP 1.1 and HTTP/2

HTTP 1.1: Multiple TCP connections are necessary



HTTP/2: Multiple requests/responses can be included in a single TCP connection



Improvement in Displaying the Certificate Error



An error in the SSL certificate of the site can easily be detected in the Web browser of the operation panel.

SSL certification status of the connected site can be displayed as an icon in the URL column of Web browser.

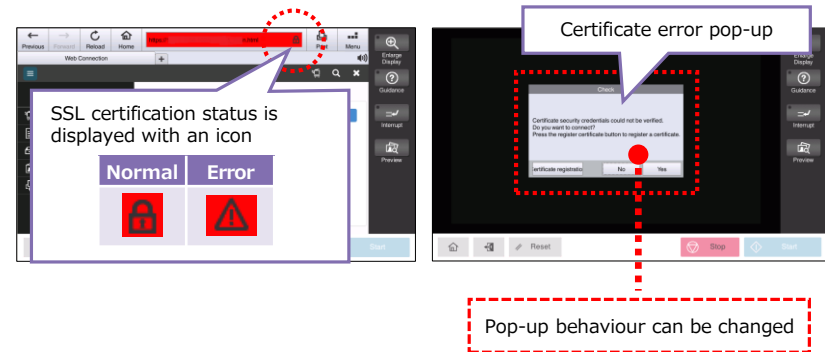
Moreover, it is possible to change the behaviour when there is an error in the SSL certificate with the administrator settings.

([Network] - [Web Browser Setting] - [SSL Certificate Verify error settings])

- [Connect to the contents]: Connects to the website without displaying the confirmation message.
- [Pop-up display (Display only once in the same certificate)]: A confirmation message is displayed only when the first error occurs for each certificate.
- [Pop-up display (Always display)]: A confirmation message is displayed each time an error occurs.
- [Do not connect to the Contents]: It will not connect to the website where the error occurred.

This makes it possible to browse the website more safely with the Web browser of the operation panel.

Web Browser



Convenient and Secure Authentication Function



The authentication function can be used securely without affecting the convenience.

Functions	Benefits
IC cards supported for external application authentication	Easy login is enabled also when external applications are used
Authentication-linked applications can ascertain when a user has logged out.	Helps improve the precision of security countermeasures
Authentication is also executed internally when AD authentication is used Operation flow is smooth during authentication.	Threat of identify fraud, etc. eliminated

Easy authentication for external applications through the use of an IC card to log in

Logging in using an IC card is supported not only for the authentication when using the machine, but also for the authentication when using external applications. It is a convenient feature that uses the same login method for any application used.

Acquiring logout information

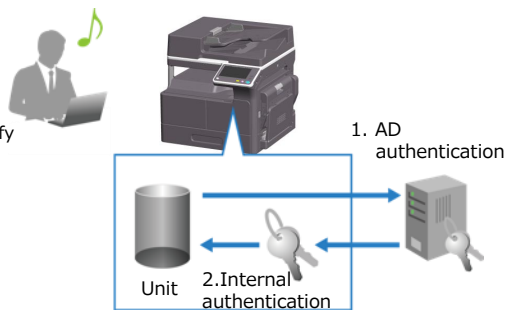
The user logout information can be acquired by the application for authentication. Whether the user has logged out intentionally or is logged in on several terminals can be ascertained. As a result, higher precision security measures can be formulated.

Also, greater latitude can be given to development of external applications; for example, a message can be displayed when a user logs out.

AD authentication and internal authentication

After authentication is completed on the authentication server, authentication is also performed internally on the unit before the data in the unit is accessed. Performing authentication twice like this prevents identify fraud and other illegal accessing, and increases the level of security.

No extra user operation is required since internal authentication on the unit is performed automatically.



Smooth operation flow during authentication

Authentication using an external authentication device is possible even while a screensaver is operating. In addition, because it is possible to log in at the same time as the authentication, the machine can be operated without logging in separately after the "ID & Print".

Adoption of IC Card Authentication



By performing authentication using an IC card, the user can log into the device and do print jobs.

The IC card authentication device reads the IC card to confirm the user's identity. By pre-registering contactless IC cards such as company IDs, user access can be controlled, users can get linked in operating the device, and authentication systems can be consolidated.



Required options Authentication Unit AU-201S, Working Table WT-517



4. Maintenance / Environment

This section explains the new functions and enhancements in relation to the machine's maintenance and environment.

Improvement of Energy-saving Functions



Improvement in the TEC value through the use of a newly developed toner

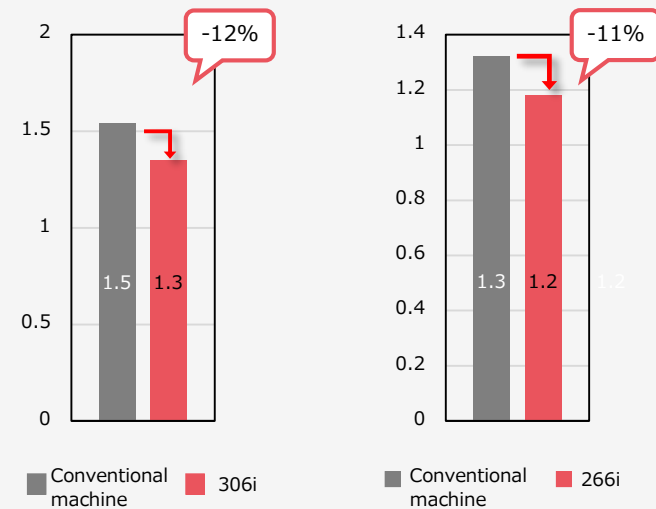
The newly developed toner bonds to paper at a lower temperature.

The TEC value has been improved through the development of the new toner and fuser unit.

Function	Benefit
Development of the new toner — that can bond at a low temperature—and fuser unit	Contributes to energy saving in the office

<Comparison of TEC value against the conventional machine>

TEC value (kWh) (at 230 V)



Improvement of Energy-saving Functions



Checks for power consumption while on standby

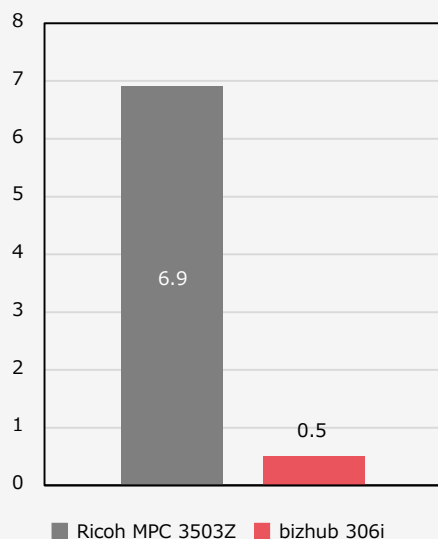
The energy-saving design brings the electricity consumption down to almost zero when the printer is not in use.

The power consumption is controlled at 0.5 W (at 230 V) while in sleep mode, making it one of the top energy-saving printers in the industry.

Function	Benefits
Reduction in power consumption to up to 0.5 W while in sleep mode	Reduces TCO Contributes to energy saving in the office

<Comparison of Power Consumption While on Standby with Another Company>

Power consumption while in sleep mode (W) (at 230 V)



Considerations for the Natural Environment



Reduced ozone emissions through the roller charging method

By adopting the roller charging method, ozone produced from electrical discharge has been reduced. The environmental impact of ozone emissions is also reduced.

Function	Benefit
Use of the roller charging method	Reduced ozone emissions and less impact on the environment



5. Specifications & Options

Let's check the device functions in this section.

Product Specifications

Specification comparison between bizhub 306i and the former machine bizhub 306

The basic performance and operability from the former machine is improved based on the concept of "simple & secure".

(The items with function which is improved from the former machine are shown in **red colour**.)

Basic Functions / Copy Function

	bizhub 306i	Former machine: bizhub 306
Type	Desktop	Desktop
Color availability	Black	Black
Scanning resolution	600 dpi x 600 dpi	600 dpi x 600 dpi
Writing resolution	600 dpi x 600 dpi	600 dpi x 600 dpi
Gradation	256	256
Memory size	4GB	512MB
Storage size	256GB (SSD)	-
Originals	Sheet, book, three-dimensional objects (max. 4-7/16 lb (2 kg))	Sheet, book, three-dimensional objects (max. 4-7/16 lb (2 kg))
Max. original size	11 x 17 (A3)	11 x 17 (A3)
Output size	Paper size	• Main Unit: A3-A5, Envelope* ¹ , OHP • Bypass tray: A3-A5, Envelope, OHP
	Image chipping width* ²	Top edge: 3/16 inches (4 mm), Bottom edge: 3/16 inches (4 mm), Right/left edges: 3/16 inches (4 mm)

Product Specifications

Basic Functions / Copy Functions (continued)

		bizhub 306i	Former machine: bizhub 306	
Warm-up time (73.4°F (23°C), std. voltage)	After the main power was turned on	within 13 sec.	within 13 sec.	
	After the sub power was turned on	within 13 sec.	within 13 sec.	
First copy time*3	B/W	within 5.0 sec.	within 5.0 sec.	
Copy speed	A4 landscape, B5 portrait	30 sheets/min.	30 sheets/min.	
Copy magnif ication	Fixed same mag nifica tion	Full Size	1:1 +/-0.5% or less	1:1 +/-0.5% or less
		Enlarge	<ul style="list-style-type: none"> Inch area: 1:1.21/1.29/2.00/4.00 Metric area: 1:1.15/1.41/2.00/4.00 	<ul style="list-style-type: none"> Inch area: 1:1.21/1.29/2.00/4.00 Metric area: 1:1.15/1.41/2.00/4.00
	Reduce	<ul style="list-style-type: none"> Inch area: 1:0.78/0.64/0.50/0.25 Metric area: 1:0.81/0.70/0.50/0.25 	<ul style="list-style-type: none"> Inch area: 1:0.78/0.64/0.50/0.25 Metric area: 1:0.81/0.70/0.50/0.25 	
	Preset	2 types (registered as programs)	2 types (registered as programs)	
Zoom		25% to 400% (in 0.1% increments)	25% to 400% (in 1% increments)	
	Lengthwise crosswise individual settings	25% to 400% (in 0.1% increments)	Lengthwise: 50% to 100% Crosswise: 50% to 200%	
Paper handling/paper capacity (41-3/4 lb (157g/m ²)) / (17 lb (64 g/m ²))	<ul style="list-style-type: none"> Universal cassette: 250 sheets Multi-bypass tray: 100 sheets 	<ul style="list-style-type: none"> Universal cassette: 250 sheets Multi-bypass tray: 100 sheets 		
Supported paper weight*4	<ul style="list-style-type: none"> Main unit: 17 to 41-3/4 lb (64 to 157 g/m²) Multi-bypass tray: 17 to 41-3/4 lb (64 to 157 g/m²) 	<ul style="list-style-type: none"> Main unit: 17 to 41-3/4 lb (64 to 157 g/m²) Multi-bypass tray: 17 to 41-3/4 lb (64 to 157 g/m²) 		
Stacking capacity	250 sheets	250 sheets		

Product Specifications

Basic Functions / Copy Functions (continued)

		bizhub 306i	Former machine: bizhub 306
Number of continuous copies		1 to 9,999 sheets	1 to 999 sheets
Auto duplex	Non-stack type <ul style="list-style-type: none"> Paper sizes: 11 x 17 to 5-1/2 x 8-1/2 landscape, A3 to A5 landscape, 8 x 13 landscape, 16K landscape/portrait, 8K landscape Paper weight: 17 lb to 23-15/16 lb (64 g/m² to 90 g/m²) *5 	Non-stack type <ul style="list-style-type: none"> Paper sizes: 11 x 17 landscape to 5-1/2 x 8-1/2 landscape/portrait, A3 landscape to A5 landscape/portrait, 8 x 13 landscape, 16K landscape/portrait, 8K landscape Paper weight: 17 lb to 23-15/16 lb (64 g/m² to 90 g/m²) *5 	
Power supply	220 - 240 V 6.9 A (50 Hz/60 Hz)	220 - 240 V 6.5 A (50 Hz/60 Hz)	
Max. power consumption	220 - 240 V: Max. 1.522 kW	220 - 240 V: Max. 1.5 kW	
Dimensions ([W] x [D] x [H])	24-11/16 x 24-1/2 x 18-1/16 inches (627 x 622 x 458 mm) (Main unit and up to the surface of Original Grass)	24-11/16 x 22-7/16 x 18-1/16 inches (627 x 570 x 458 mm) (Main unit and up to the surface of Original Grass)	
Machine dimensions ([W] x [D])	36-9/16 x 40-15/16 inches (928 x 1,040 mm) (This shows the dimensions when the Paper Trays are pulled out and the Tray Extension of the Bypass Tray is opened.)	36-9/16 x 38-1/4 inches (928 x 971 mm) (This shows the dimensions when the Paper Trays are pulled out and the Tray Extension of the Bypass Tray is opened.)	
Weight	Approx. 82-11/16 lb (37.5 kg) (Main unit + ADF)	Approx. 67-7/8 lb (30.8 kg) (Main unit)	

*1. Wrinkles or printing defects may occur depending on the envelope type, storage and printing environment.

*2. While printing, 3/16 inches (4.0 mm) is left out on each edge.

*3. Reading in A4 landscape, equal magnification, Tray 1, and document glass surface

*4. If the paper having weight more than or equal to 42 lb (158 g/m²) is used, you may not get desired image quality. Also, depending on the paper type, contents may not be printed correctly. No support for ink jet paper.

*5. If paper having weight between 13-13/16 lb to 16-3/4 lb (52 to 63 g/m²), more than or equal to 42 lb (158 g/m²) are used, you may not get desired image quality.

Product Specifications

Reversing Automatic Document Feeder

	bizhub 306i (DF-633)	Former machine: bizhub 306 (DF-625)
Document feeder type	Reverse Automatic Document Feeder (Standard)	Reverse Automatic Document Feeder (Optional)
Original type	Plain paper: 9-5/16 lb ~ 34-1/16 lb (35 g/m ² ~ 128 g/m ²) (1-sided, Mixed paper 1-sided) 13-5/16 lb ~ 34-1/16 lb (50 g/m ² ~ 128 g/m ²) (2-sided, Mixed paper 2-sided)	Plain paper: 9-5/16 lb ~ 34-1/16 lb (35 g/m ² ~ 128 g/m ²) (1-sided) 13-5/16 lb ~ 34-1/16 lb (50 g/m ² ~ 128 g/m ²) (2-sided, Mixed paper)
Original size	Max. 11 x 17 (A3)	Max. 11 x 17 (A3)
Original loading capacity	130 sheets (21-1/4 lb (80 g/m ²)) Supports same width mixed originals.	70 sheets (21-1/4 lb (80 g/m ²)) Supports same width mixed originals.
Feeding speed (A4 landscape) *At copying	1-sided original Color/Black: 55 pages/min.	• Color: 4 pages/min. (at 300 dpi), 14 pages/min. (at 150 dpi) • Black: 46 pages/min.
	2-sided original Color/Black: 22 pages/min.	Color/Black: 22 pages/min.
Power supply	Supplied from the main unit.	Supplied from the main unit.
Dimensions ([W] x [D] x [H])	22-1/4 x 18-1/8 x 4-13/16 inches (565 x 461 x 121.6 mm)	21-1/2 x 19-1/8 x 3-1/8 inches (546 x 486 x 80 mm)
Weight	Approx. 13-7/16 lb (6.1 kg)	Approx. 11-11/16 lb (5.3 kg)

Product Specifications

Printer Function (Standard Feature)

	bizhub 306i	Former machine: bizhub 306
Type	Embedded	Embedded
Print speed	Conforms to the main unit specifications.	Conforms to the main unit specifications.
Resolution	600 dpi x 600 dpi	600 dpi x 600 dpi
Memory size	4GB (4,096MB)	0.5GB (512MB)
Page description language	PCL5e/c, PCL6, PostScript3 compatible	GDI PCL5e, PCL6 (Optional)
Fonts	PCL 80 European fonts	53 European fonts
	PS 137 European fonts	-
Supported protocols	TCP/IP (FTP, SMB, SMTP, WebDAV)	TCP/IP (LPD, Raw, SMB, IPP)
Supported operating systems	PCL <ul style="list-style-type: none"> • Windows 7/7 x64/8.1/8.1 x64/10/10 x64 • Windows Server 2008/2008 x64/2008 R2/2012/2012 R2/2016 	<ul style="list-style-type: none"> • Windows Vista/Vista x64/7/7 x64/8.1/8.1 x64/10/10 x64 • Windows Server 2008/2008 x64/2008 R2/2012/2012 R2
	PS <ul style="list-style-type: none"> • Windows 7/7 x64/8.1/8.1 x64/10/10 x64 • Windows Server 2008/2008 x64/2008 R2/2012/2012 R2/2016 • Mac OS X 10. 9/10.10/10.11/10.12/10.13 (Intel-based PPD) • Linux (PPD) 	-
Interface	Ethernet 10Base-T/ 100Base-TX/ 1000Base-T USB2.0 (High-Speed) /1.1	Ethernet 10Base-T/ 100Base-TX USB2.0 (High-Speed) /1.0

Product Specifications

Internet FAX Function (Standard Feature)

	bizhub 306i	Former machine: bizhub 306
Communication protocol	TX: SMTP, RX: POP3, TCP/IP Simple mode, Full mode	TX: SMTP, RX: POP3, TCP/IP Simple mode, Full mode
Sending paper size	A3, B4, A4	A3, B4, A4
Resolution	200 x 200 dpi, 400 x 400 dpi, 600 x 600 dpi	200 x 100 dpi, 200 x 200 dpi, 400 x 400 dpi, 600 x 600 dpi
Data format	TIFF-F	TIFF-F
Store Address	An E-mail address is registered by one-touch dial (up to 2,000 addresses).	An E-mail address is registered by one-touch dial (up to 32 addresses).
Broadcasting (Sequential broadcasting)	Max. 600 destinations	Max. 255 destinations
Data compression system	MMR/MR/MH/JBIG	MMR/MR/MH/JBIG

Product Specifications

Scanner Function (Standard Feature)

	bizhub 306i	Former machine: bizhub 306
Type	Full-color scanner	Full-color scanner
Scanning size	Max. 11 x 17 (A3)	Max. 11 x 17 (A3)
Scanning resolution	Push: 200 dpi/300 dpi/400 dpi/600 dpi Pull: 100 dpi/200 dpi/300 dpi/400 dpi/600 dpi	Push (B/W): 150 dpi/300 dpi/600 dpi Push (Gray/Color): 150 dpi/300 dpi Pull (B/W): 150 dpi/300 dpi/600 dpi Pull (Gray/Color): 150 dpi/300 dpi
Scanning speed (8-1/2 x 11 (A4) landscape, 1-sided original)	Color, B/W: 55 pages/min. (at 300 dpi/DF-633)	Color: 8 pages/min. (at 300 dpi/DF-625) B/W: 46 pages/min. (at 300 dpi/DF-625)
Interface	Ethernet 10Base-T/ 100Base-TX/ 1000Base-T	Ethernet 10Base-T/ 100Base-TX
Supported protocols	TCP/IP (FTP, SMB, SMTP, WebDAV) (IPv4/IPv6)	TCP/IP (FTP, SMB, SMTP) (IPv4/IPv6)
Output format	TIFF, JPEG, PDF, Compact PDF, OOXML(pptx), XPS, Compact XPS	TIFF, JPEG, PDF
Compatible operating systems*	Windows 7/7 x64/8.1/8.1 x64/10/10 x64	Windows Vista/Vista x64/7/7 x64/8/8 x64/8.1/8.1 x64

* Supported OS for TWAIN driver

Product Specifications

Specifications comparison of bizhub 306iseries

	bizhub 306i	bizhub 266i	bizhub 246i	bizhub 226i
Copy or print speed	30 ppm	26 ppm	24 ppm	22 ppm
Paper Feed Cabinet	PF-509	PF-509	PF-509	PF-509
Automatic double-sided scanning	DF-633 (Standard Feature)	DF-633	DF-633	DF-633
Weight	82-11/16 lb (37.5 kg)	70-9/16 lb (32 kg)	70-9/16 lb (32 kg)	70-9/16 lb (32 kg)



KONICA MINOLTA